

MLX3 3" Drilling/Flowback Choke

15,000 psig/Max Cv 132/Max Bean Size 192

This choke valve uses a bonnet nut to retain the flow trim in the valve body. The flow trim is pressure balanced to minimize the stem loads and provide low operating torques. Standard end connections 3" 15K, adaptable to other sizes.

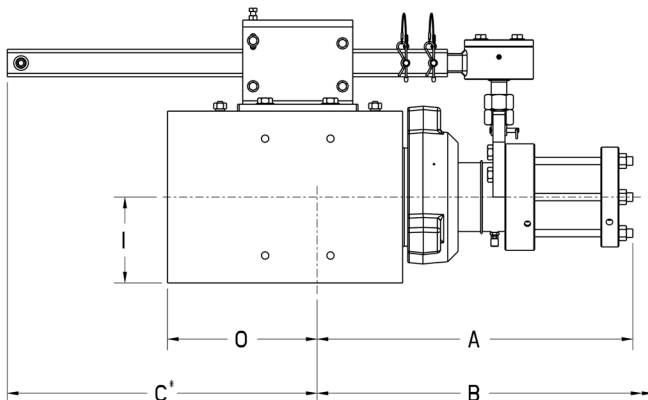
Features

Design Features

- 15,000 psig rated, up to 3" bean
- HUN style, linear actuated
- Reversible (re-usable) plug and seat
 - C/W internal plug "exposed" thread protector
- Service gantry (optional)
 - Enhanced safety and reduced downtime during maintenance

MFV Drilling Choke "Differentiators"

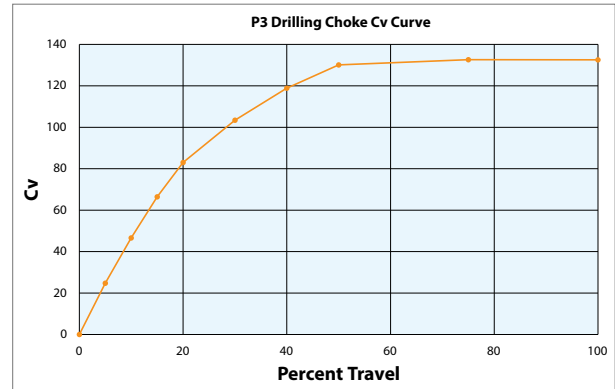
- Canister style insert comes out as a single unit – incl. seat
- Ease of field serviceability
 - **No specialty tools/pullers** i.e. MFV only "commercial" socket set, hammer and grease gun
- Serrations on the bonnet are for increased serviceability and to aid in removal
- Dual-Barrier of Protection - Utilizes TIR (Total impact resistant) technology as primary trim protection barrier, with long balance sleeve providing secondary protection
- Outlet wear sleeve removal "service" port
 - 2nd use "doubles" as a pressure gauge "telltale" port behind the wear sleeve to identify outlet wear/damage



Valve Specifications

Body Type	Right Angle
Body Rating	15,000 PSIG (Maximum C.W.P.)
Bonnet Type	Hammer Union
Trim Style	Gated Seat
Balanced/Unbalanced	Balanced
Flow Characteristic	Quick Open
Leakage Class	FCI 70-2 Class V (STD.)
Available Temperature Range	-50F to 250F
API 6A	PSL 3, PSL 4

Performance Characteristics



Envelope Dimensions

Dimensions 'A', 'B', and 'C' apply to hydraulic linear operated valves and are tabulated below. 'I' (inlet) and 'O' (outlet) dimensions based on 3" 15K standard connection. **Adaptable to other sizes and pressure ratings.**

Dimensions		
	inch	mm
A	22.95	583
B	33.27	845
C*	22.53	572
I	6.25	159
O	10.88	276

*Optional Gantry System



6A-0138



17D-0008

MLX3 3" Drilling/Flowback Choke

15,000 psig/Max Cv 132/Max Bean Size 192

Material Options

	EE-Sour Service	HH-Sour Service
Body	AISI 4130	AISI 4130 w/Alloy 625
Bonnet	AISI 4130	Alloy 718
Stem	Stainless Steel	Alloy 718
Retaining Sleeve	ASTM A743 CF8M	Alloy 625
Balance Sleeve	Stainless Steel	Alloy 718
Seals	Teflon	Teflon

Other materials available upon request.

Materials may change based on temperature range and PSL.

Trim Options

	EE-Sour Service	HH-Sour Service
Material	Tungsten Carbide/ Stainless Steel	Tungsten Carbide/ Alloy 718
Application	Liquid, Gas, Multiphase; Abrasive	Liquid, Gas, Multiphase; Corrosive, Abrasive
Cv	132	
Bean Size	192	
Travel	1.50"	

Other Valve Options

	Standard	Optional
Outlet Sleeve	Alloy Steel	Tungsten Carbide
Body Bleed Port	-	API Autoclave
End Connection	Stud x Stud	Adapter Spool
Retaining Sleeve	-	TC Coated
Local Position	-	Mechanical or Position Transmitter
Override	-	Hydraulic Handpump

Some limitations may apply.

Actuation

Master Flo	Other
FC Hydraulic Piston	Linear Electro-Hydraulic
Pneumatic Piston	

Other actuators available upon request.

Parts List

- | | |
|-----------------------------------|---|
| 1. Body | 17. Seal Pack: Stem - Bonnet |
| 2. Seat | 18. Retaining Ring: Bonnet – Stem Seal |
| 3. Pin: Retaining Sleeve | 19. Bushing: Balance Sleeve – Internal Plug |
| 4. Internal Plug | 20. Seal: Balance Sleeve – Internal Plug |
| 5. Retaining Sleeve | 21. Retaining Ring: Balance Sleeve |
| 6. Stem | 22. Seal: Internal Plug |
| 7. Balance Sleeve | 23. Plug: Internal Plug |
| 8. Seal: Bonnet – Balance Sleeve | 24. Backup Ring: Seat |
| 9. Pin: Balance Sleeve - Bonnet | 25. Seal: Seat |
| 10. Seal: Bonnet - Body | 26. Seal: Wear Sleeve |
| 11. Bonnet | 27. Wear Sleeve |
| 12. Pin: Bonnet - Body | 28. Fitting: Body |
| 13. Hammer Union Nut | 29. Check Valve: Bonnet |
| 14. Key: Stem - Bonnet | |
| 15. Wiper Rod: Bonnet | |
| 16. Heavy Retaining Ring - Bonnet | |

